



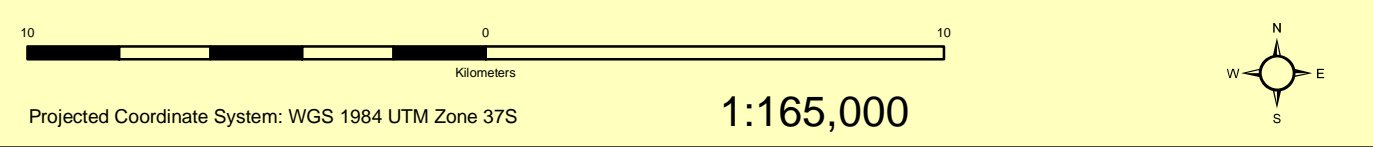
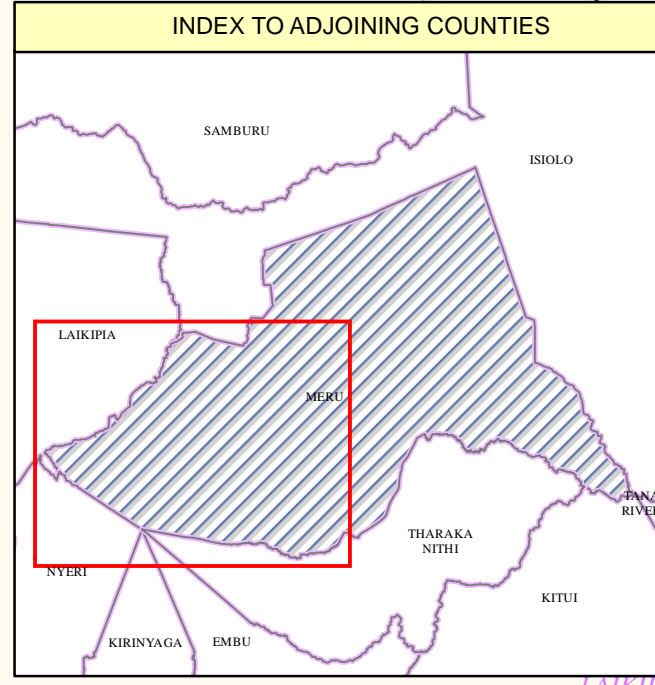
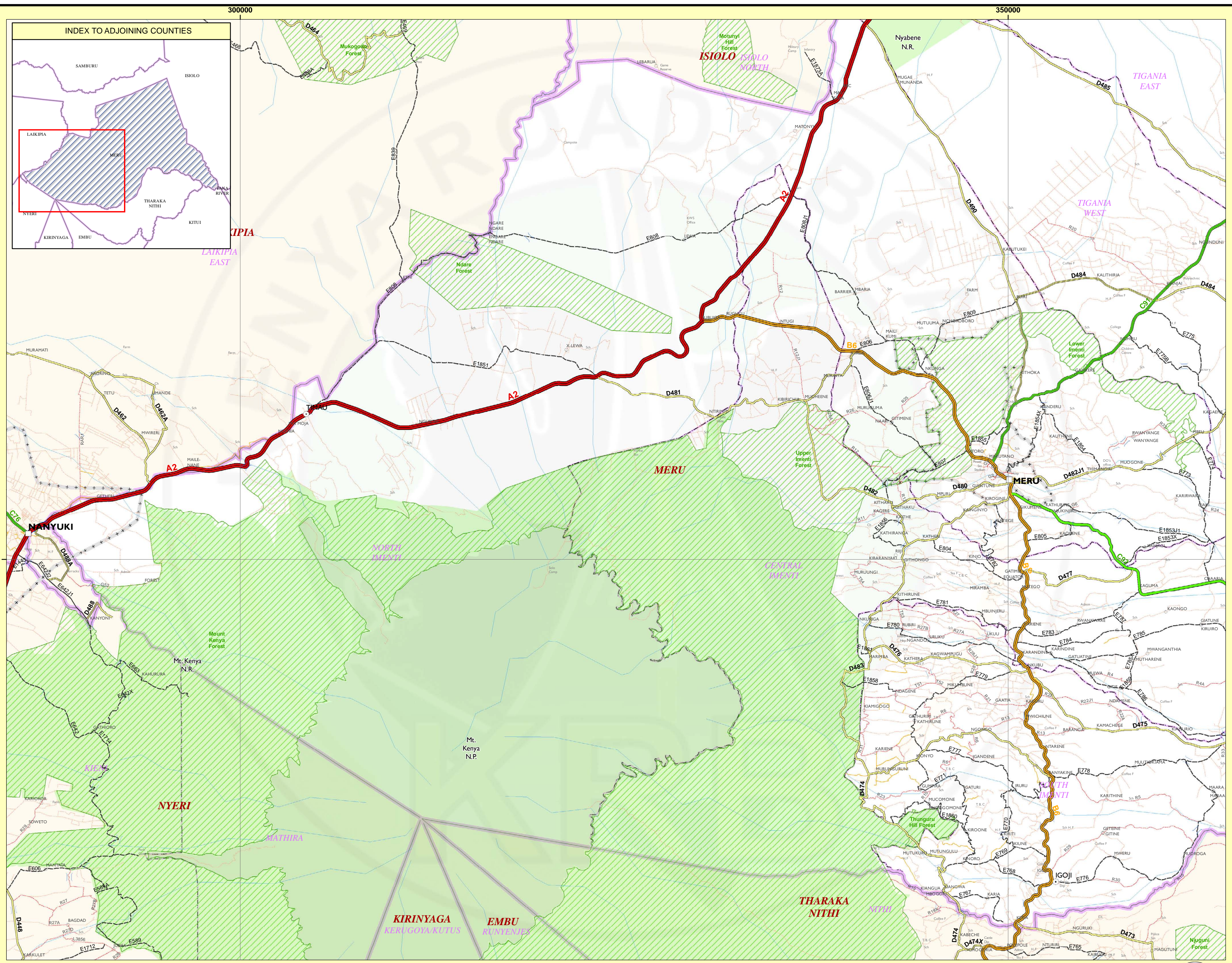
REPUBLIC OF KENYA
NATIONAL ROAD NETWORK

MERU COUNTY

ROAD CLASSES AND SURFACE TYPES

- Provincial HQ
- District HQ
- Divisional HQ
- Market Centres
- A, Paved
- A, Unpaved
- B, Paved
- B, Unpaved
- C, Paved
- C, Unpaved
- D, Paved
- D, Unpaved
- E, Paved
- E, Unpaved
- SPR, Paved
- SPR, Unpaved
- U, Paved
- U, Unpaved
- Rivers
- Lakes
- National Park
- National Reserve
- Forests
- Municipal Boundary
- Constituency Boundary
- County Boundary
- International Boundary

Label	Name
Bus Stn	Bus Station
Ch	Church
CC	Community Centre
Coffee F	Coffee Factory
Educ.	Education Centre
Hosp	Hospital
H. F. P. H	Home for physically handicapped
M.C.C	Milk Collection Centre
P. line	Pipeline
Police Stn	Police Station
Power Stn	Power Station
Rehab	Rehabilitation Centre
Rwy. Stn	Railway Station
Sch	School
S. T. W	Sewage Treatment Works
Sl. Hse	Slaughter House
Steel F	Steel Factory
T. B. C	Tea Buying Centre
Tea F	Tea Factory
Tel. Mast	Telephone Mast
Tv. Stn	Transmission Station
W & S	Water & Sanitation
W. P	Water Project
W. Pt	Water Point
W. R	Water Reservoir
W. T	Water Tank
W. T. W	Water Treatment Works



1:165,000

This map was created using GPS survey data of the main roads Network (previously classified roads network) by Ministry of Roads, 2004, and GPS data from survey of the previously unclassified network by CarBro/Gaith Consulting Engineers for KRB/MoR, 2009 with funding support from the Nordic Development Fund.
Administrative Boundaries data was supplied by Central Bureau of statistics while National Parks and Reserves boundaries are used courtesy of Kenya Wildlife Service. Other data is from United States Geological Survey (USGS) Digital Data Series.
This map is not an authority on delineation of boundaries

THE PERMANENT SECRETARY
MINISTRY OF ROADS
P. O. BOX 30260 - 00100
NAIROBI, KENYA

Published by Kenya Roads Board
THE EXECUTIVE DIRECTOR
KENYA ROADS BOARD
P. O. BOX 73718 - 00200
NAIROBI, KENYA

